

# 90° Swivel

The 90°swivel is the result of a shank-nut assembly inserted into a housing. It is considered a stand alone swivel with a 90° thread.

## Applications

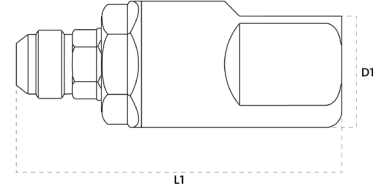


## Technical Specifications

dash	Size		Working Pressure (MPa)	Flow Rate (l/min)	Spillage (ml)	Force to Connect (N)	Burst pressure (MPa)		
	mm	inch					Male	Female	Male + Female
08	12.5	1/2"	43 MPa				172		

Material	<b>Steel</b>
Seals	<b>FKM</b>
Working temperatures	<b>-40 °C to 180 °C</b>
Surface treatment	<b>MATE 500 (CrIII)</b>
Series Interchange	

Valve Type	
Connection	
Disconnection	
Connection Under Pressure	



## 90° Swivel

Size		Thread details			
mm	inch	Thread Type	Thread Standard	Thread	Part Number
12,5	1/2"	13/ SAE	ISO 8434-2	3/4"-16 UNF MALE JIC	S30813FS00FS-10V000

