

# PRESA DI FORZA SEMPRE INNESTATA versione 17

CONSTANT MESH POWER TAKE-OFF  
version 17

**CODICE PTO**  
PTO CODE

**056.032.00175**  
**056.035.00172**

**CAMBIO**  
GEARBOX

**ALLISON**

Codice foglio: 997-256-03517 Rev: AD

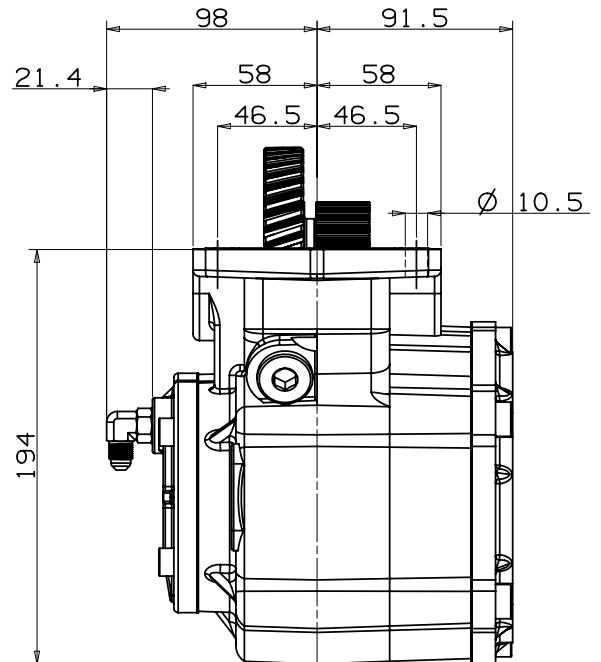
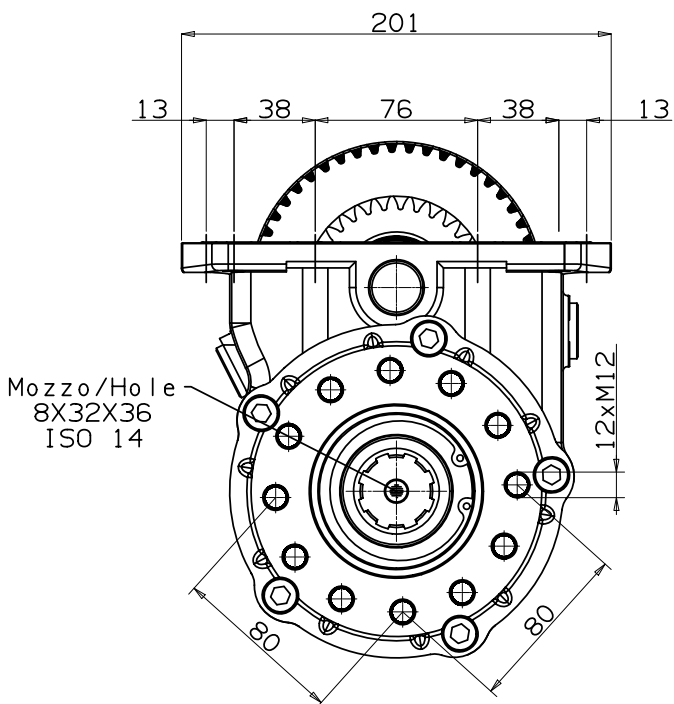
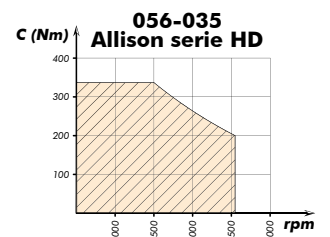
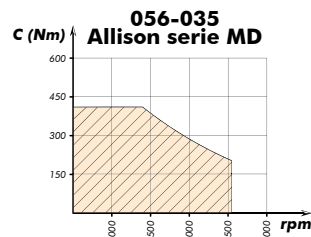
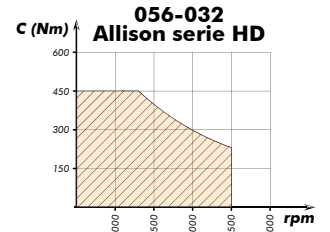
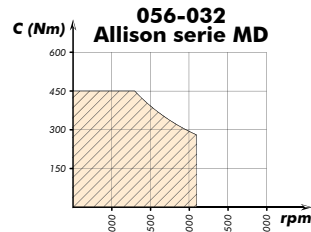
Rev: //

Codice fascicolo:

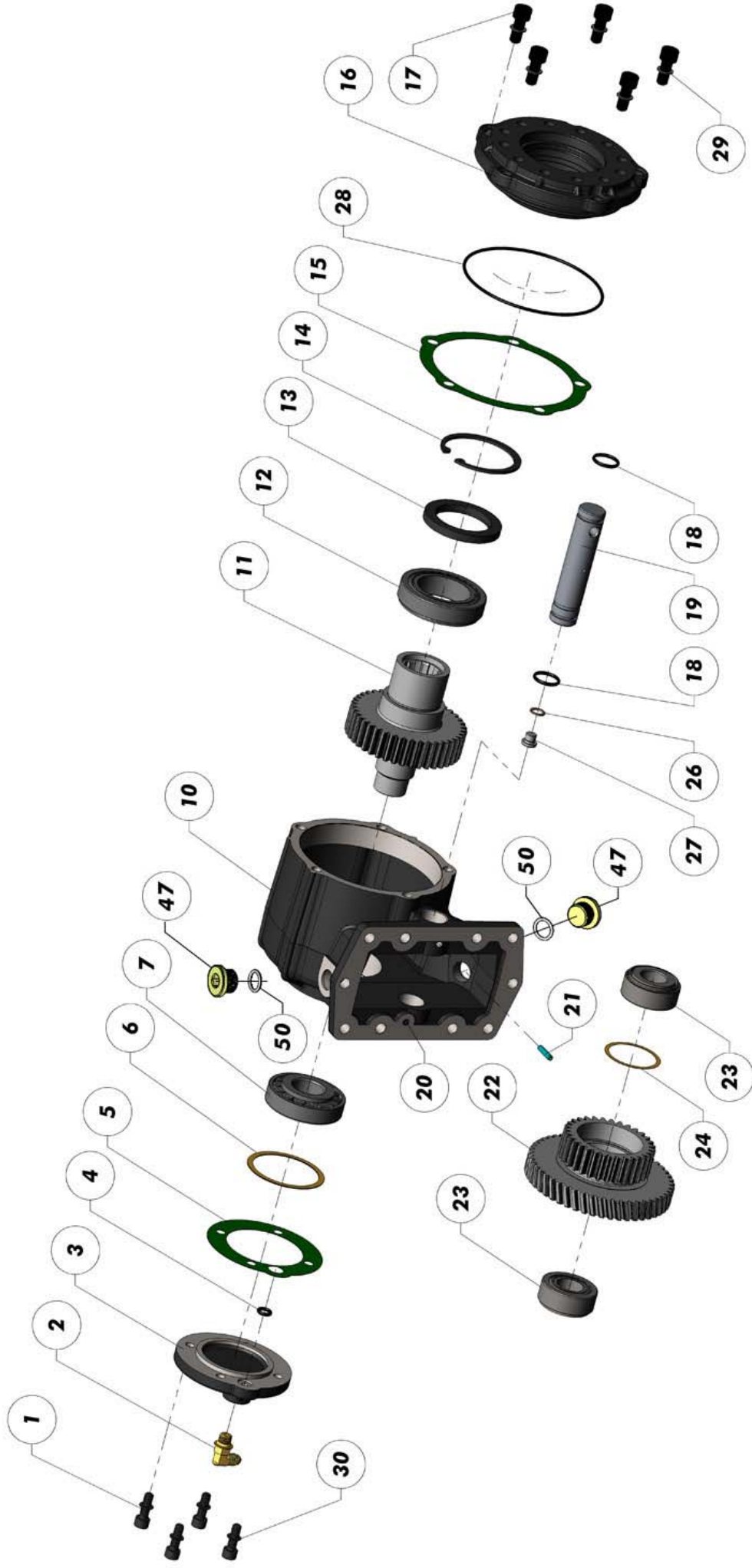
Data: Lunedì 13 settembre 2010



## DIAGRAMMA DI UTILIZZO WORKING CONDITION



pag.1



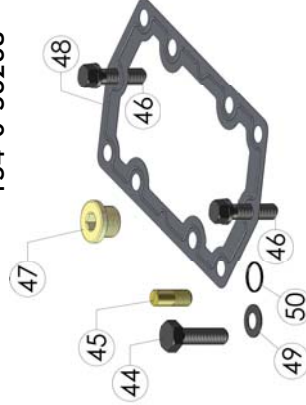
N°	Codice/Code	Descrizione / Description	Q.
01	502-003-00566	Vite M8 L=25	4
02	156-980-00103	Raccordo a 90°	1
03	528-002-00214	Flangia	1
04	506-006-00350	Guarnizione O-R	1
05	507-001-00782	Guarnizione	1
06	529-007-00191	Rondella	1
07	510-002-00168	Cuscinetto rulli conici	1
08			
09			
10	515-010-00024	Corpo PTO	1
11	521-007-00419	Albero dentato V.032	1
	521-007-00339	Albero dentato V.035	1
12	510-002-00319	Cuscinetto	1
13	506-010-72509	Paraolio	1
14	501-001-00677	Seeger	1
15	507-001-00791	Guarnizione	1
16	528-004-00356	Flangia	1
17	502-000-00774	Vite M10 L=25	5
18	506-006-00181	Guarnizione O-R	2
19	526-003-00155	Spina	1
20	504-010-00018	Grano conico	2
21	504-003-00124	Grano M8	1
22	525-007-00724	Ingranaggio SIP V.032	1
	525-007-00608	Ingranaggio SIP V.035	1
23	510-002-00122	Cuscinetto	2
24	529-007-00164	Rondella V.032	1
	529-007-00057	Rondella V.035	3

N°	Codice/Code	Descrizione / Description	Q.
25			
26	116-009-01068	Rondella rame x G 1/8	1
27	115-006-00108	Tappo G 1/8	1
28	506-006-03500	Guarnizione OR 3500	1
29	501-020-00101	Rosetta SCHNORR x M10	5
30	501-020-00085	Rosetta SCHNORR x M8	4

### KIT PTO-CAMBIO / MOUNTING KIT

N°	Codice/Code	Descrizione / Description	Q.
44	502-004-00065	Vite M10 L=35	6
45	504-000-00083	Grano	2
46	502-000-56269	Vite speciale M10 L=34	2
47	540-000-00425	Tappo TCE	2
48	507-000-56269	Guarnizione metallo PTO	1
49	501-018-00105	Rondella elastica	6
50	506-006-03908	Guarnizione OR 3-908	2
51	502-000-00934	Vite 12 point M10x1.5	8

Kit PTO VITI TE  
STANDARD EUROPA  
Mounting kit EUROPE type  
154-0-56268



Kit PTO VITI (SCREWS)  
12 POINT HELIX US  
Mounting kit USA type  
154-000-56320



Tipo cambio Gearbox	Codice PTO PTO code	Versione Version	Giri pto a 1000 giri motore Pto ratio@1000 eng.rpm rpm	Coppia massima Max torque Nm	Lato montaggio Mounting side	Uscita Output	Rotazione Rotation	Kit di montaggio Mounting kit	Kit lubrificazione Lube kit
MD 3000 MD 3060 P/PR 12V MD 3066 P/PR 12V MD 3200 MD 3560 P/PR 12V MD 3566 P/PR 12V	56-032-00175	17	907	450	S/D L/R	Poster. Rear	Ant. Ccw	KIT VITI TE STANDARD EUROPA 154-0-56268  o/or KIT VITI (SCREWS) 12 POINT HELIX US 154-0-56320	94-11-90
HD 4060 P 12V HD 4070 P 12V HD 4076 P 12V HD 4560 P 12V			1293						
MD 3000 MD 3060 P/PR 12V MD 3066 P/PR 12V MD 3200 MD 3560 P/PR 12V MD 3566 P/PR 12V	56-035-00172		1190	420					
HD 4060 P 12V HD 4070 P 12V HD 4076 P 12V HD 4560 P 12V			1697	340					

Peso - Weight  
16,6 Kg

Codice foglio: 997-256-03517 Rev: AD

Rev: //

Codice fascicolo:

Data: Lunedì 13 settembre 2010