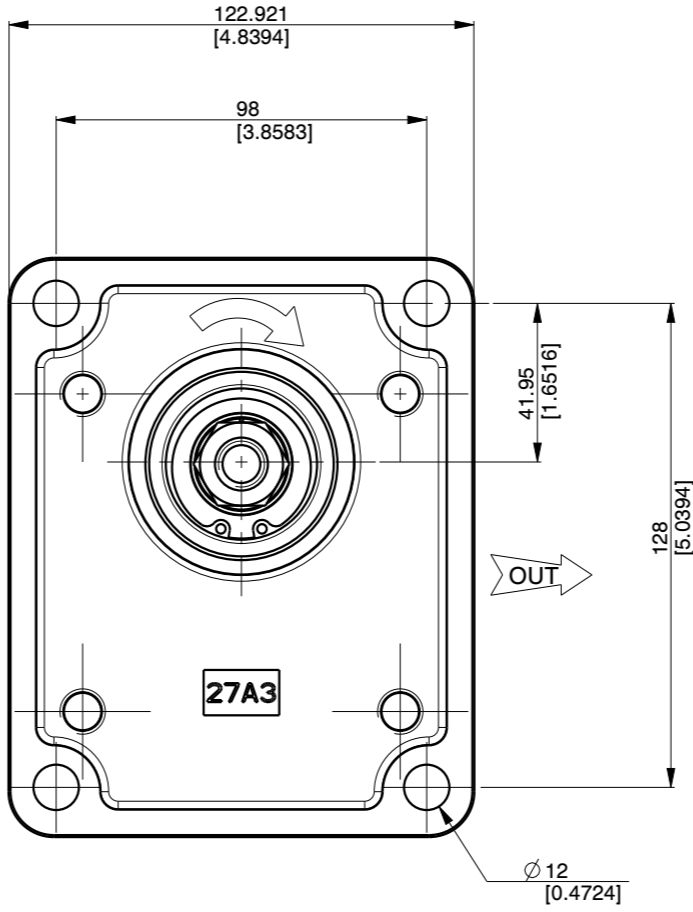
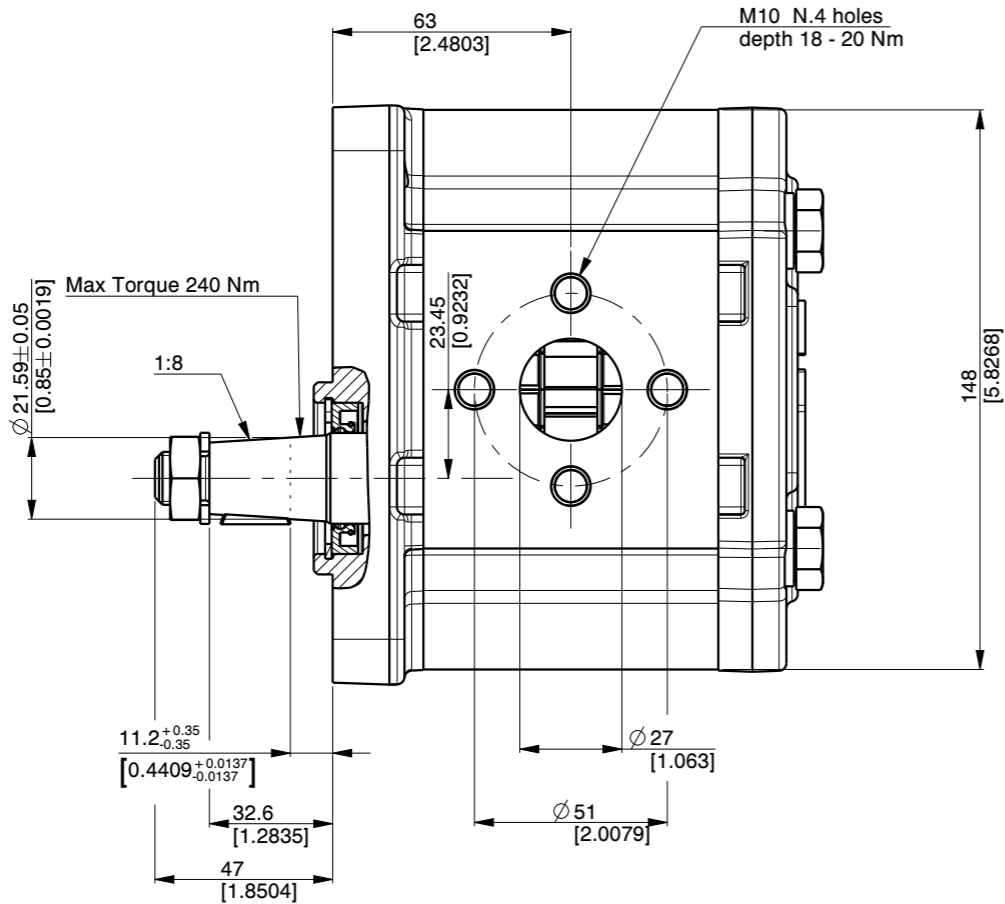
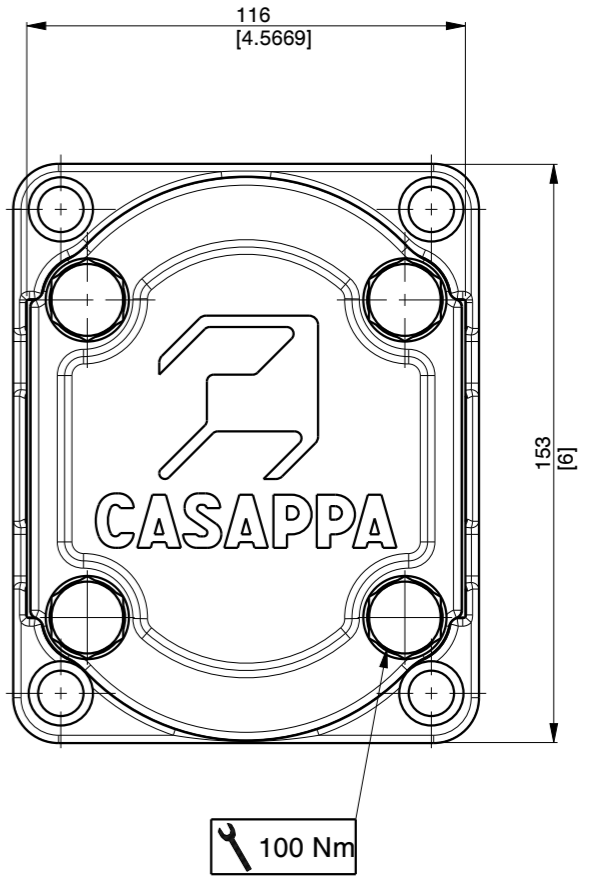


IN



OUT



Signature for approval

Date:

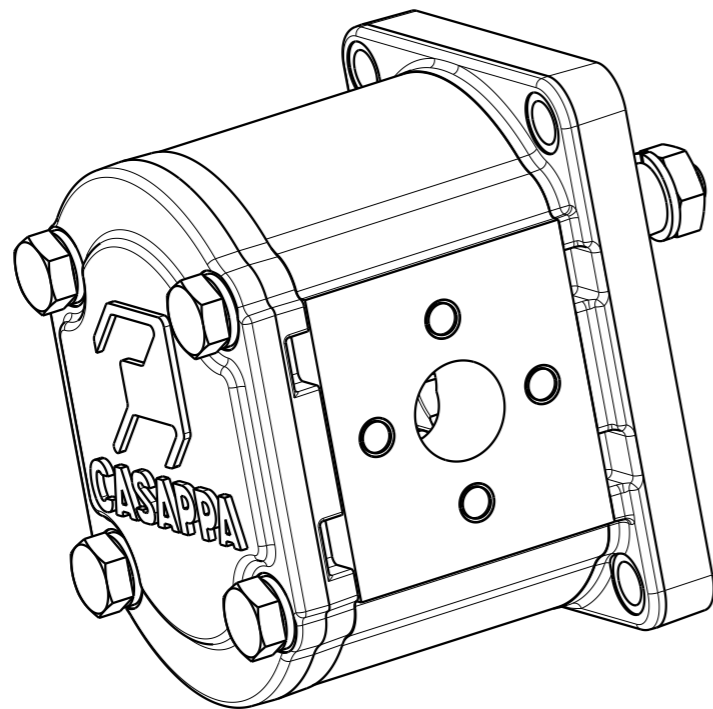
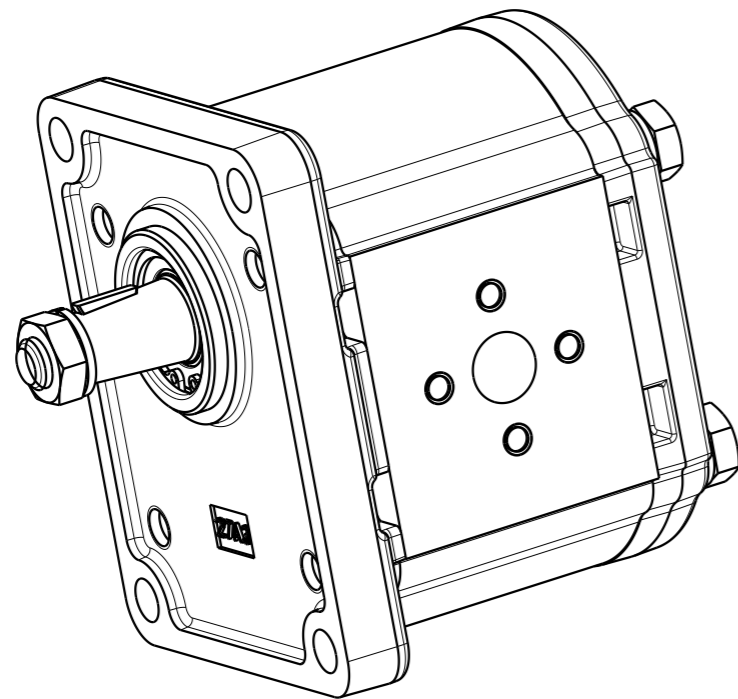
For operating condition outside those stated, please consult Casappa S.p.A. Technical sales department

Dimensions w/o tol:
 - Both machining ref.: $< 400 \pm 0.6$; $\geq 400 \pm 1$
 - One or both rough ref.: ± 3
 Dimensions are in mm.

Cap.Forn./Rules Suppl.	Trattamento Termico / Heat Treatment	Trattamento Superficiale / Surface Treatment	Prof.(mm) / Depth
-	-	-	-
Quote senza indicazione di tolleranza / Unless otherwise specified tolerances		Materiale / Material	Durezza / Hardness
GRADO DI PRECISIONE ACCURACY LEVEL		-	-
Disegnato/Drawn	Approvato/Approved	Mod.Tecn./ Release change	Progetto/Project
Date	02/09/2021	02/09/2021	-
Firma	ZazzeraP	CarusoD	File
Signature			03590325
Descrizione / Description			Scala/Scale
POMPA PLP30.22D0-83E3-LED/EB-N-FS			1:2
PUMP PLP30.22D0-83E3-LED/EB-N-FS			Formato/Size
			A3
Codice / Code			Ind. Mod./ Index Rev.
03590325			0
Sostituisce / It replaces		-	
Sostituito da / Replaced by		-	

The information hereon is the property of CASAPPA Spa. Without written permission, any copying, transmittal to others and any use except that for which it's loaned, is prohibited.





PUMP DATA

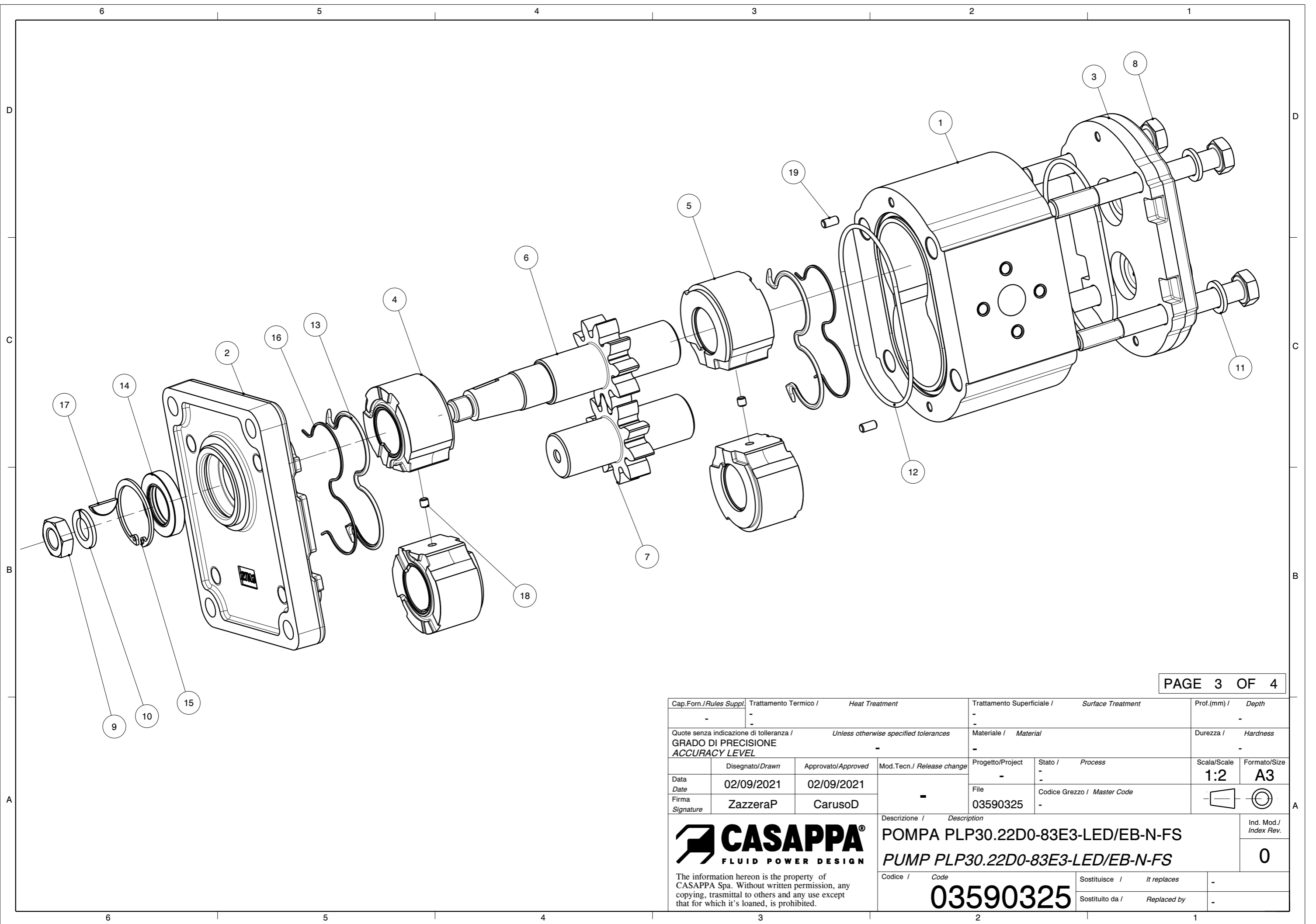
Senso di rotazione (guardando l'albero conduttore) Direction of rotation (looking on drive shaft)	Destro (D) Clockwise (D)		
Cilindrata - Displacement	21.99 [cm3/rev]		
Campo pressione di alimentazione per pompe Inlet pressure range for pump	0.7 - 3 [bar abs.]		
Pressione max continua - Max continuous pressure	P1	250 [bar]	
Pressione max intermittente - Max intermittent pressure	P2	270 [bar]	
Pressione max picco - Max peak pressure	P3	280 [bar]	
Velocità - Speed	min P1	350 [min ⁻¹]	
	max P1	3000 [min ⁻¹]	
Guarnizioni - Seals type	NBR		
Temperatura minima - Min temperature	-25 [°C]		
Temperatura massima - Max temperature	continuous	+80 [°C]	
	peak	+100 [°C]	
Campo di viscosità - Viscosity range	recommended	12 to 100 mm ² /s (cSt)	
	permitted	max 750 mm ² /s (cSt)	
FILTERING REQUIREMENT AND RECOMMENDED FLUID CONTAMINATION			
Pressione di lavoro [bar] - Working pressure [bar]	Δp < 140	140 < Δp < 210	Δp > 210
Contaminazione classe NAS 1638 - ISO 4406:1999 Contamination class NAS 1638 - ISO 4406:1999	NAS 10 - 21/19/16	NAS 9 - 20/18/15	NAS 8 - 19/17/14
Da ottenere con filtro βx (c) ≥ 200 secondo ISO 16889 Achieved with filter βx (c) ≥ 200 according to ISO 16889	25 μm	10 μm	10 μm
Codice del prototipo - Prototype code	-		
Codice cliente - Customer code	-		
Valvola di massima pressione - Relief valve	- [bar]		
Pressione di stand-by valvola LS - Stand-by pressure LS valve	- [bar]		
Peso - Weight	8.710 kg		
Vernice - Painting	-		
Trattamenti speciali - Special treatment	-		

Cap.Forn./Rules Suppl.	Trattamento Termico / Heat Treatment	Trattamento Superficiale / Surface Treatment	Prof.(mm) / Depth
-	-	-	-
Quote senza indicazione di tolleranza / Unless otherwise specified tolerances	GRADO DI PRECISIONE / ACCURACY LEVEL		Durezza / Hardness
-	-		-
Disegnato/Drawn	Approvato/Approved	Mod.Tecn./ Release change	Progetto/Project
02/09/2021	02/09/2021	-	-
Firma / Signature	ZazzeraP	CarusoD	File / Codice Grezzo / Master Code
			03590325
Descrizione / Description			Ind. Mod./ Index Rev.
POMPA PLP30.22D0-83E3-LED/EB-N-FS PUMP PLP30.22D0-83E3-LED/EB-N-FS			0
Codice / Code	Sostituisce / It replaces		-
03590325	Sostituito da / Replaced by		-

For operating condition outside those stated, please consult Casappa S.p.A. Technical sales department

CASAPPA
FLUID POWER DESIGN


The information hereon is the property of CASAPPA Spa. Without written permission, any copying, transmittal to others and any use except that for which it's loaned, is prohibited.



Cap.Forn./Rules Suppl.	Trattamento Termico / Heat Treatment	Trattamento Superficiale / Surface Treatment	Prof.(mm) / Depth
-	-	-	-
Quote senza indicazione di tolleranza / Unless otherwise specified tolerances	GRADO DI PRECISIONE / ACCURACY LEVEL	Materiale / Material	Durezza / Hardness
-	-	-	-
Disegnato/Drawn	Approvato/Approved	Mod.Tecn./ Release change	Progetto/Project
02/09/2021	02/09/2021	-	-
Firma / Signature	ZazzeraP	CarusoD	File / Codice Grezzo / Master Code
			03590325
			Descrizione / Description POMPA PLP30.22D0-83E3-LED/EB-N-FS PUMP PLP30.22D0-83E3-LED/EB-N-FS
The information hereon is the property of CASAPPA Spa. Without written permission, any copying, trasmittal to others and any use except that for which it's loaned, is prohibited.			Ind. Mod./ Index Rev. 0
Codice / Code		Sostituisce / It replaces	-
03590325		Sostituito da / Replaced by	-

Pos.	Codice Code	Kit	Q.tà Q.ty	Descrizione Description	Indice modifica Index revision
19	49270000		2	SPINA MM.5x10 UNI1707 H8 DOWEL PIN MM.5x10 UNI1707 H8	1
18	49260000		2	SPINA MM.5x5 DOWEL PIN MM.5x5	0
17	42550000		1	LINGUETTA 4X7.5 UNI 6606 280 HB KEY 4 X 7.5 UNI 6606 -280 HB-	0
16	41387140		2	ANTIESTRUSORE Z PL30 S/D BACK-UP RING Z PL30	4
15	40810000		1	ANELLO 40 UNI 7437-DIN 472 RING 40 UNI 7437-DIN 472	0
14	39730000		1	PARAOLIO BABSL 24X40X7 SHAFT SEAL BABSL 24X40X7	1
13	39654800		2	GUARNIZIONE PL30 S/D SEAL PL30 S/D	2
12	39090000		2	ANELLO TOROIDALE PH 2-154 90GRA SH.A (94,92X2,62) O-RING SEAL PH 2-154 90°SH.A (94.92x2,62)	0
11	37584300		4	ROSETTA 13X20 UNI 6592-69 R80 WASHER 13X20 UNI 6592-69 R80	0
10	37583903		1	ROSETTA B14 DIN 128 GEOMET WASHER B14 DIN 128 GEOMET	0
9	36880000		1	DADO M 14X1,5 UNI 5589-A-6S-FEZN12-C-1A NUT M 14X1,5 UNI 5589-A-6S-FEZN12-C-1A	0
8	36640995		4	VITE TE M 12X115 - 5737 - 10.9 SCREW TE M 12X115 - 5737 - 10.9	0
7	32747152		1	INGR.CONDOTTO F-K-HD-PL30.22/F DRIVEN GEAR F-K-HD-PL30.22/F	2
6	27800030		1	INGR.CONDUTTORE PL30.22-83-6 DRIVE GEAR PL30.22-83-6	9
5	25934042		2	SEMIRASAMENTO PL30 S HALF THRUST PLATE PL30 S	10
4	25934032		2	SEMIRASAMENTO PL30 D HALF THRUST PL30 D	10
3	21919800		1	COPERCHIO POST. PL30-S/D REAR COVER PL30-S/D	5
2	21919000		1	COPERCHIO ANT. PL30-E3-S/D FRONT COVER PL30 E3-S/D	5
1	17700099		1	CORPO PL30.22-LED/EB BODY PL30.22-LED/EB	8

Cap.Forn./Rules Suppl.	Trattamento Termico / Heat Treatment		Trattamento Superficiale / Surface Treatment		Prof.(mm) / Depth
-	-		-		-
Quote senza indicazione di tolleranza / Unless otherwise specified tolerances			Materiale / Material		Durezza / Hardness
GRADO DI PRECISIONE ACCURACY LEVEL			-		-
Disegnato/Drawn	Approvato/Approved	Mod.Tecn./Release change	Progetto/Project	Stato / Process	Scala/Scale
Data	02/09/2021	02/09/2021	-	-	1:1
Firma	ZazzeraP	CarusoD	File	Codice Grezzo / Master Code	Formato/Size
Signature			03590325	-	A4

 <p>The information hereon is the property of CASAPPA Spa. Without written permission, any copying, trasmittal to others and any use except that for which it's loaned, is prohibited.</p>	Descrizione / Description POMPA PLP30.22D0-83E3-LED/EB-N-FS PUMP PLP30.22D0-83E3-LED/EB-N-FS		Ind. Mod./ Index Rev.
	Codice / Code 03590325		0
	Sostituisce / It replaces Sostituito da / Replaced by		-