

Ø36.5^{-0.025}_{-0.050}
[1.437^{-0.0010}_{-0.0019}]

5
[0.1969]

90°

16.075
[0.6329]

OUT

71.5
[2.815]

32.2
[1.2677]

Z

45 Nm

89.5
[3.52]

114.2
[4.4961]

CASAPPA

87
[3.4252]

15
[0.5906]

Ø19
[0.748]

N° 4 Holes M8
Depth 14
15 Nm

Ø40
[1.5748]

SECTION B-B
SCALE 1:1

Key 3,15x6,5x16

3.15^{-0.01}_{-0.04}
[0.124^{-0.0004}_{-0.0015}]

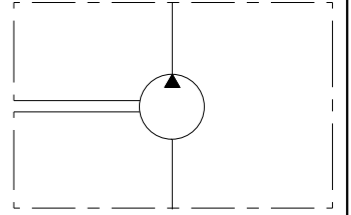
9
[0.3543]

Dimensions w/o tol:
- Both machining ref.: < 400 ± 0.6; ≥ 400 ± 1
- One or both rough ref.: ± 3
Dimensions are in mm.

Signature for approval

Date: _____

For operating condition outside those stated, please consult Casappa S.p.A. Technical sales department



PAGE 1 OF 4

39.7
[1.563]

27.8
[1.0945]

60
[2.3622]

N° 4 Holes M6
Depth 13
8 Nm

102
[4.0157]

Ø16.655±0.05
[0.6557±0.0019]

90°

16.075
[0.6329]

M12x1,5
40 Nm

12±0.35
[0.4724±0.0137]

Taper 1:8

Max Torque 140 Nm

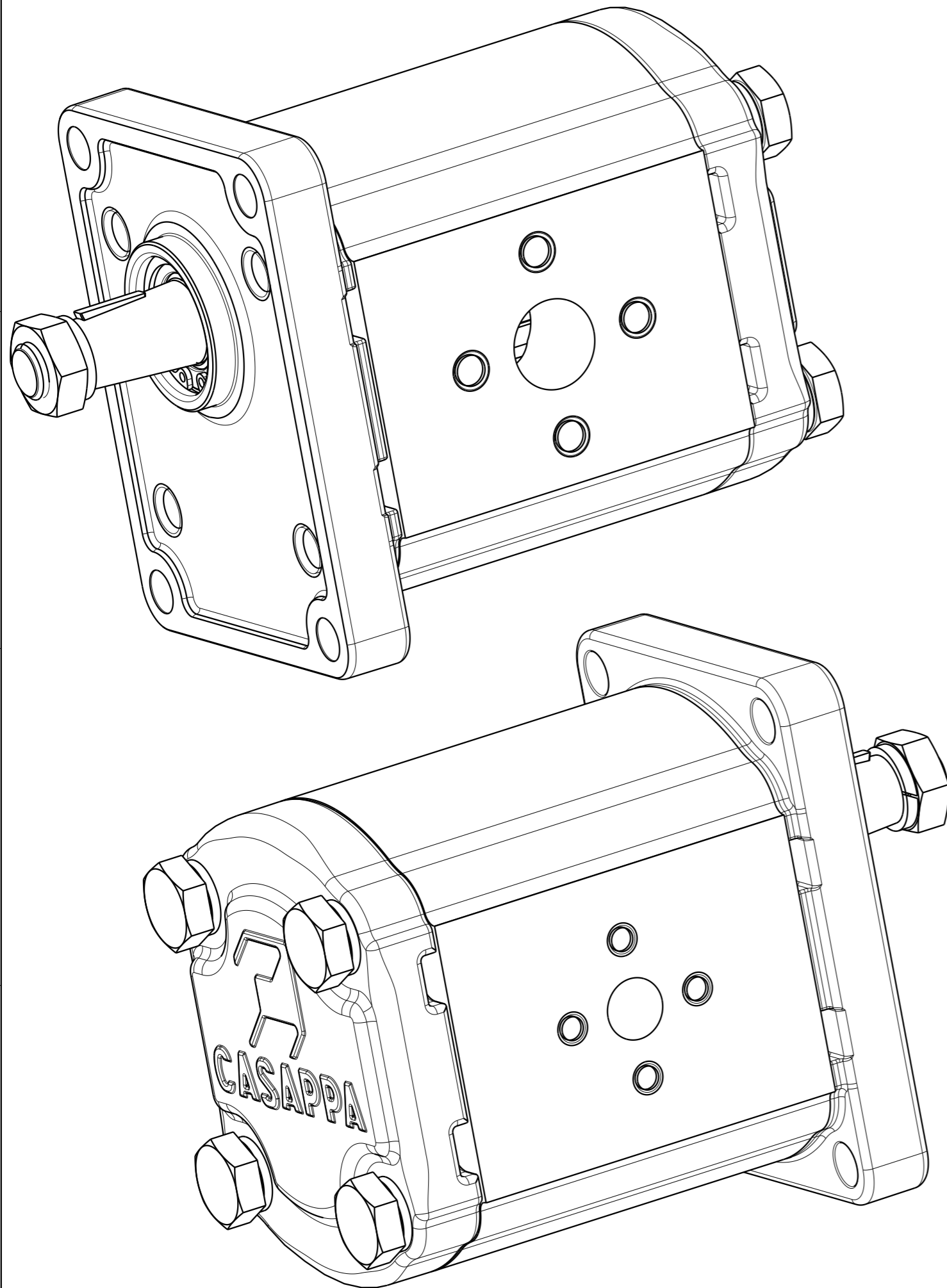
Ø13
[0.5118]

Ø30
[1.1811]

Cap.Forn./Rules Suppl.	Trattamento Termico / Heat Treatment	Trattamento Superficiale / Surface Treatment	Prof.(mm) / Depth
-	-	-	-
Quote senza indicazione di tolleranza / Unless otherwise specified tolerances		Materiale / Material	Durezza / Hardness
GRADO DI PRECISIONE ACCURACY LEVEL		-	-
Disegnato/Drawn	Approvato/Approved	Mod.Tecn./ Release change	Progetto/Project
Date	06-12-2017	06-12-2017	T1307
Firma	RossiC	GuidettiM	File
Signature			02004651
Descrizione / Description			Scala/Scale
POMPA PLP20.25S0-82E2-LEB/EA-N-EL FS			7:10
PUMP PLP20.25S0-82E2-LEB/EA-N-EL FS			Formato/Size
			A3
Codice / Code			Ind. Mod./ Index Rev.
02004651			1
Sostituisce / It replaces			



The information hereon is the property of CASAPPA Spa. Without written permission, any copying, trasmittal to others and any use except that for which it's loaned, is prohibited.



PUMP DATA		
Senso di rotazione (guardando l'albero conduttore) Direction of rotation (looking on drive shaft)		Sinistro (S) Counterclockwise (S)
Cilindrata - Displacement		26.42 [cm3/rev]
Campo pressione di alimentazione per pompe Inlet pressure range for pump		0.7-3 [bar abs.]
Pressione max continua - Max continuous pressure	P1	170 [bar]
Pressione max intermittente - Max intermittent pressure	P2	190 [bar]
Pressione max picco - Max peak pressure	P3	210 [bar]
Velocità - Speed	min P1	500 [min ⁻¹]
	max P1	2500 [min ⁻¹]
Guarnizioni - Seals type		NBR
Temperatura di esercizio - Operating temperature		-25 to +80 [°C]
Campo di viscosità - Viscosity range	recommended	12 to 100 mm ² /s (cSt)
	permitted	max 750 mm ² /s (cSt)
Classe di contaminazione - Contamination class	$\Delta p > 200$ bar $\beta x = 75 - 10 \mu m$	8 - Nas 1638 19/17/14 - ISO 4406
	$\Delta p < 200$ bar $\beta x = 75 - 25 \mu m$	10 - Nas 1638 21/19/16 - ISO 4406
Codice del prototipo - Prototype code		-
Codice cliente - Customer code		-
Valvola di massima pressione - Relief valve		- [bar]
Pressione di stand-by valvola LS - Stand-by pressure LS valve		- [bar]
Peso - Weight		3.190 [kg]
Vernice - Painting		
Trattamenti speciali - Special treatment		

For operating condition outside those stated, please consult Casappa S.p.A. Technical sales department

Signature for approval

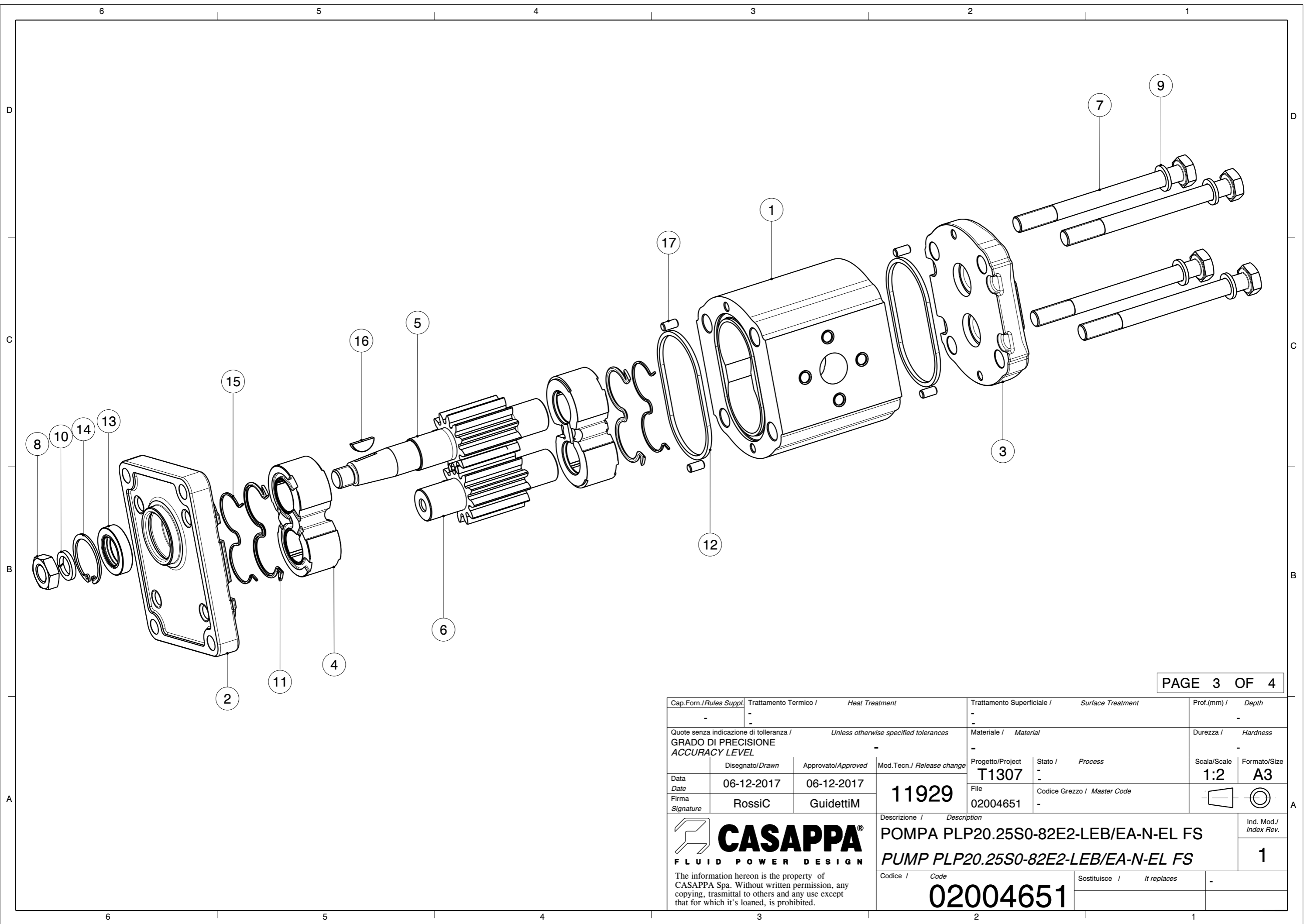
Date: _____

PAGE 2 OF 4

Cap.Forn./Rules Suppl.	Trattamento Termico / Heat Treatment	Trattamento Superficiale / Surface Treatment	Prof.(mm) / Depth
-	-	-	-
Quote senza indicazione di tolleranza / Unless otherwise specified tolerances		Materiale / Material	Durezza / Hardness
GRADO DI PRECISIONE ACCURACY LEVEL		-	-
Data / Date	Disegnato/Drawn	Approvato/Approved	Mod.Tecn./ Release change
06-12-2017	06-12-2017	11929	Progetto/Project T1307
Firma / Signature	RossiC	GuidettiM	File 02004651
Descrizione / Description		Scala/Scale	Formato/Size
POMPA PLP20.25S0-82E2-LEB/EA-N-EL FS PUMP PLP20.25S0-82E2-LEB/EA-N-EL FS		1:1	A3
Codice / Code		Codice Grezzo / Master Code	Ind. Mod./ Index Rev.
02004651		-	1
Sostituisce / It replaces		-	




The information hereon is the property of CASAPPA Spa. Without written permission, any copying, transmittal to others and any use except that for which it's loaned, is prohibited.



Cap.Forn./Rules Suppl.	Trattamento Termico / Heat Treatment		Trattamento Superficiale / Surface Treatment		Prof.(mm) / Depth		
-	-		-		-		
Quote senza indicazione di tolleranza / Unless otherwise specified tolerances			Materiale / Material		Durezza / Hardness		
GRADO DI PRECISIONE / ACCURACY LEVEL			-		-		
	Disegnato/Drawn	Approvato/Approved	Mod.Tecn./ Release change	Progetto/Project	Stato / Process	Scala/Scale	Formato/Size
Data	06-12-2017	06-12-2017		T1307	-	1:2	A3
Firma	RossiC	GuidettiM	11929	File	Codice Grezzo / Master Code		
Signature				02004651	-		
			Descrizione / Description POMPA PLP20.25S0-82E2-LEB/EA-N-EL FS PUMP PLP20.25S0-82E2-LEB/EA-N-EL FS			Ind. Mod./ Index Rev. 1	
The information hereon is the property of CASAPPA Spa. Without written permission, any copying, trasmittal to others and any use except that for which it's loaned, is prohibited.			Codice / Code 02004651		Sostituisce / It replaces -		

Pos.	Codice Code	Kit	Q.tà Q.ty	Descrizione Description	Indice modifica Index revision
17	49270000		4	SPINA MM.5x10 UNI1707 H8 DOWEL PIN MM.5x10 UNI1707 H8	1
16	42520000		1	LINGUETTA 3.15X6.5 280 HB KEY 3.15X6.5	1
15	41387101		2	ANTIESTRUSORE PL-K20 S/D Z (SIC) (BZ) ANTIEXTRUSION PL-K20 S/D Z (SIC) (BZ)	5
14	40661000		1	ANELLO 30 UNI 7437-DIN 472 RING 30 UNI 7437-DIN 472	0
13	39700000		1	PARAOLIO BABSL 18X30X7 SHAFT SEAL BABSL 18X30X7	1
12	39666195		2	GUARNIZIONE PL 20 STANDARD SEZIONE QUADRATA STANDARD SEAL PL 20 SQUARE SECTION	0
11	39656101		2	GUARNIZIONE PL-K20 S/D (SIC) (BZ) SEAL PL-K20 S/D (SIC) (BZ)	1
10	37583803		1	ROSETTA 12 DIN 7980 GEOMET 321/A WASHER 12 DIN 7980 GEOMET321/A	0
9	37583716		4	ROSETTA 10 (10,5x16x2) HV300 GEOMET 321/A WASHER 10 (10,5x16x2) HV300 GEOMET 321/A	0
8	36860000		1	DADO M 12X1,5 UNI 5589-A-6S-GEOMET 321/A PLUS M NUT M 12X1,5 UNI 5589-A-6S-GEOMET 321/A PLUS M	0
7	36595130		4	VITE TE M 10X115 - 5737 - 10.9 GEOMET 321/A PLUSM SCREW TE M 10X115 - 5737 - 10.9 GEOMET 321/A PLUSM	1
6	27750070		1	INGR.CONDOTTO F-K-PL20.25 DRIVEN GEAR F-K-PL20.25	5
5	27720860		1	INGR.CONDOTTORE PL20.25-82/FS DRIVE SHAFT PL20.25-82/FS	7
4	25930362		2	RASAMENTO PL20 S/D AV R05 (GGB) THRUST PLATE PL20 S/D AV R05 (GGB)	3
3	21915751		1	COPERCHIO POST. PL20/AL REAR COVER PL20/AL	4
2	21911152		1	COPERCHIO ANT.PL20/AL FRONT COVER PL20/AL	9
1	17672148		1	CORPO PL20.25-LEB/EA BODY PL20.25-LEB/EA	8

PAGE 4 OF 4

Cap.Forn./Rules Suppl.	Trattamento Termico / Heat Treatment	Trattamento Superficiale / Surface Treatment	Prof.(mm) / Depth
-	-	-	-
Quote senza indicazione di tolleranza / Unless otherwise specified tolerances		Materiale / Material	
GRADO DI PRECISIONE ACCURACY LEVEL		Durezza / Hardness	
-		-	
Disegnato/Drawn	Approvato/Approved	Mod.Tecn./ Release change	Progetto/Project
Data Date	06-12-2017	06-12-2017	T1307
Firma Signature	RossiC	GuidettiM	11929
			File
			02004651
			Stato / Process
			-
			Codice Grezzo / Master Code
			-
 CASAPPA® FLUID POWER DESIGN			Ind. Mod./ Index Rev.
The information hereon is the property of CASAPPA Spa. Without written permission, any copying, trasmittal to others and any use except that for which it's loaned, is prohibited.			1
Descrizione / Description		Codice / Code	
POMPA PLP20.25S0-82E2-LEB/EA-N-EL FS		02004651	
PUMP PLP20.25S0-82E2-LEB/EA-N-EL FS		Sostituisce / It replaces	
		-	