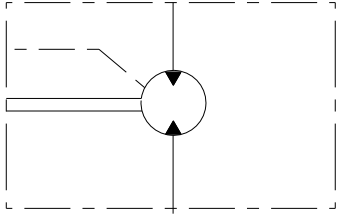


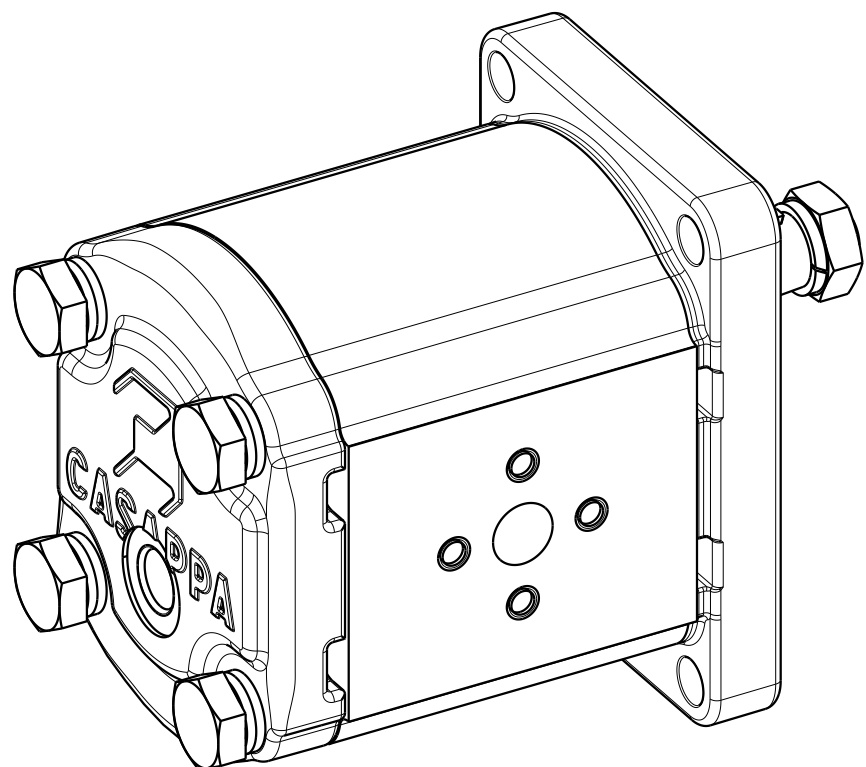
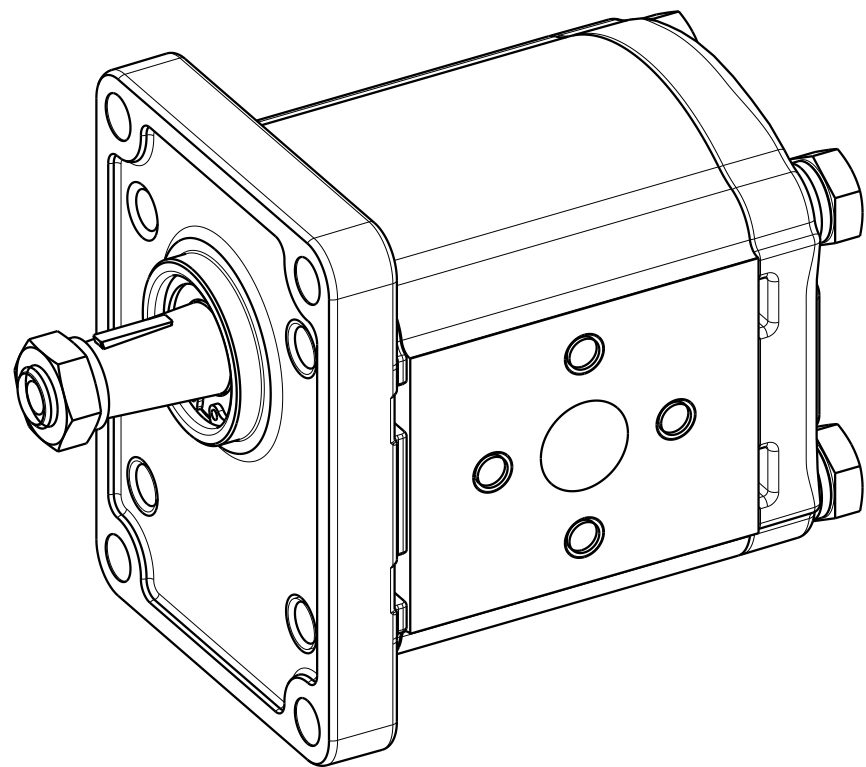
For operating condition outside those stated, please consult Casappa S.p.A. Technical sales department

Signature for approval \_\_\_\_\_  
Date: \_\_\_\_\_



Cap.Forn./Rules Suppl.	Trattamento Termico / Thermic Treatment	Trattamento Superficiale / Superficial Treatment	Prof.(mm) / Depth
-	-	-	-
Quote senza indicazione di tolleranza / Dimensions without tolerance		Materiale / Material	Durezza / Hardness
GRADO DI PRECISIONE / ACCURACY LEVEL		-	-
Disegnato/Drawing	Approvato/Approved	Mod.Tecn./ Revision	Project
Date	13-06-2017	13-06-2017	V402
Firma/Signature	RossiC	GuidettiM	11459
		File	01999807
		Stato / State	-
		Codice Grezzo / Rough Code	-
Particolare / Description			Scale
<b>CASAPPA</b> FLUID POWER DESIGN			7:10
MOTORE PLM20.20R0-82E2-LEB/EA-N-EL			Format
MOTOR PLM20.20R0-82E2-LEB/EA-N-EL			A3
Codice / Code			Ind. Mod./ Index Rev.
01999807			1
Sostituisce / Replace		-	
Sostituito da / Replaced from		-	

The information hereon is the property of CASAPPA Spa. Without written permission, any copying, transmittal to others and any use except that for which it's loaned, is prohibited.



## MOTOR DATA

Senso di rotazione (guardando l'albero conduttore) Direction of rotation (looking on drive shaft)		Reversibile (R) Reversible (R)
Cilindrata - Displacement		21.139 [cm3/rev]
Pressione max continua - Max continuous pressure	P1	200 [bar]
Pressione max intermittente - Max intermittent pressure	P2	220 [bar]
Pressione max picco - Max peak pressure	P3	240 [bar]
Pressione max sullo scarico dei motori unidirezionali Max back pressure for single rotation motors	P1 (cont.)	- [bar]
	P2 (20 s)	- [bar]
	P3 (8 s)	- [bar]
Pressione max sul drenaggio dei motori reversibili Max drain line pressure on the reversible rotation motors		5 [bar]
Velocità - Speed	min P1	500 [min <sup>-1</sup> ]
	max P1	3000 [min <sup>-1</sup> ]
Guarnizioni - Seals type		NBR
Temperatura di esercizio - Operating temperature		-25 to +80 [°C]
Campo di viscosità - Viscosity range	recommended	12 to 100 mm <sup>2</sup> /s (cSt)
	permitted	max 750 mm <sup>2</sup> /s (cSt)
Classe di contaminazione - Contamination class	$\Delta p > 200$ bar $\beta x = 75 - 10 \mu m$	8 - Nas 1638
		19/17/14 - ISO 4406
	$\Delta p < 200$ bar $\beta x = 75 - 25 \mu m$	10 - Nas 1638
		21/19/16 - ISO 4406
Codice del prototipo - Prototype code		-
Codice cliente - Customer code		-
Valvola di massima pressione - Relief valve		[bar]
Pressione di stand-by valvola LS - Stand-by pressure LS valve		[bar]
Peso - Weight		3.020 [kg]
Vernice - Painting		
Trattamenti speciali - Special treatment		

Signature for approval

Date: \_\_\_\_\_

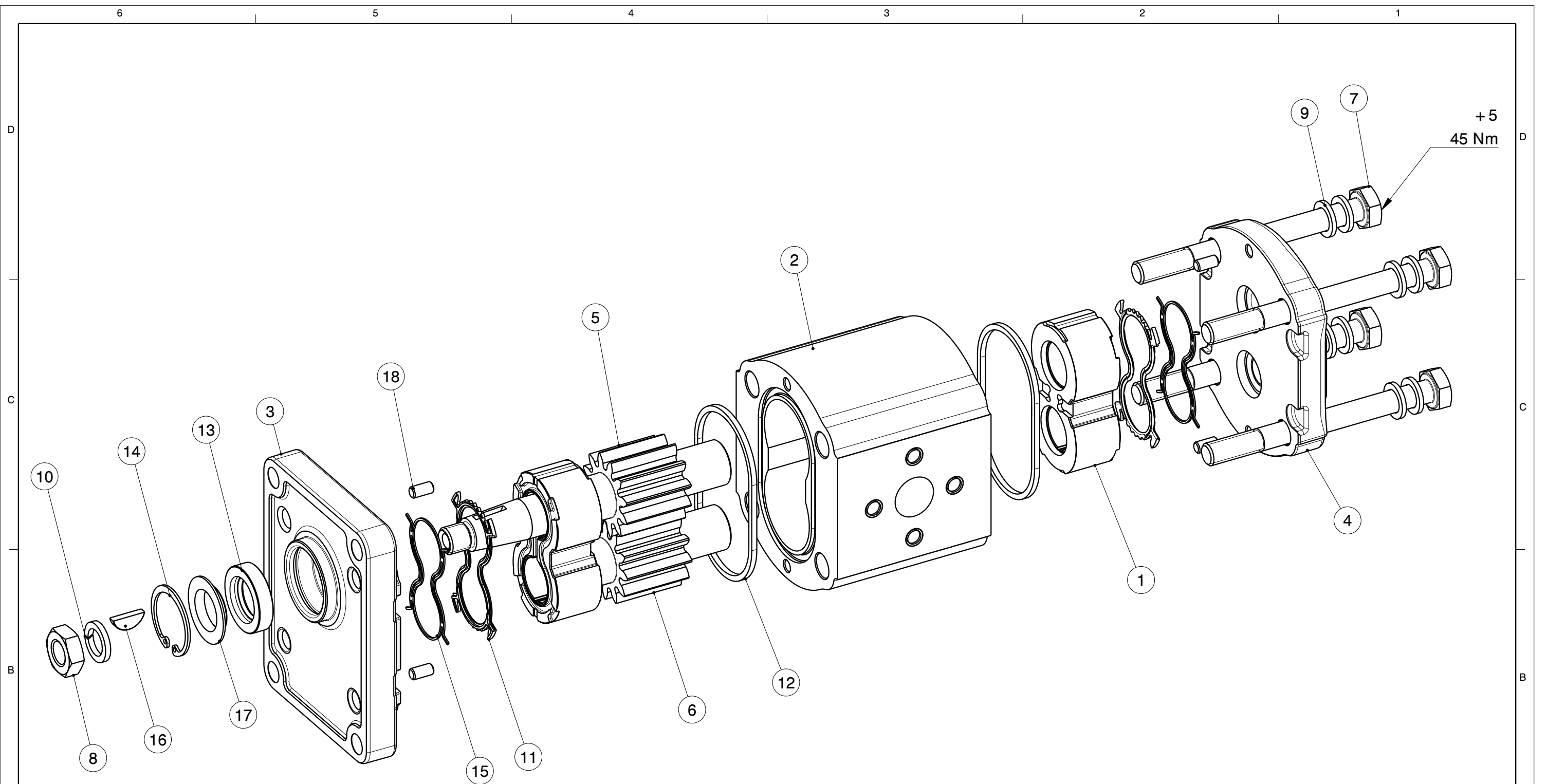
For operating condition outside those stated, please consult Casappa S.p.A. Technical sales department


PAGE 2 OF 4

Cap.Forn./Rules Suppl.	Trattamento Termico / Thermic Treatment	Trattamento Superficiale / Superficial Treatment	Prof.(mm) / Depht
-	-	-	-
Quote senza indicazione di tolleranza / GRADO DI PRECISIONE ACCURACY LEVEL	Dimensioni without tolerance	Materiale / Material	Durezza / Hardness
-	-	-	-
Disegnato/Drawing	Approvato/Approved	Mod.Tecn./ Revision	Project
13-06-2017	13-06-2017	11459	V402
Firma Signature	RossiC	GuidettiM	File 01999807
			Stato / State
			-
			Codice Grezzo / Rough Code
			-
			Scale
			7:10
			Format
			A3
			Ind. Mod./ Index Rev.
			1
		Particolare / Description	
		MOTORE PLM20.20R0-82E2-LEB/EA-N-EL	
		MOTOR PLM20.20R0-82E2-LEB/EA-N-EL	
		Codice / Code	Sostituisce / Replace
		01999807	-
			Sostituito da / Replaced from
			-

**CASAPPA**  
FLUID POWER DESIGN

The information hereon is the property of CASAPPA Spa. Without written permission, any copying, trasmittal to others and any use except that for which it's loaned, is prohibited.



Cap.Forn./Rules Suppl.	Trattamento Termico / Thermic Treatment		Trattamento Superficiale / Superficial Treatment		Prof.(mm) / Dept
-	-		-		-
Quote senza indicazione di tolleranza / Dimensions without tolerance			Materiale / Material		Durezza / Hardness
GRADO DI PRECISIONE ACCURACY LEVEL			-		-
	Disegnato/Drawing	Approvato/Approved	Mod.Tecn./ Revision	Project	Stato / State
	13-06-2017	13-06-2017	11459	V402	-
	Firma	RossiC	GuidettiM	File	Codice Grezzo / Rough Code
				01999807	-
 <b>CASAPPA</b> FLUID POWER DESIGN				Particolare / Description <b>MOTORE PLM20.20R0-82E2-LEB/EA-N-EL</b> MOTOR PLM20.20R0-82E2-LEB/EA-N-EL	
The information hereon is the property of CASAPPA Spa. Without written permission, any copying, trasmittal to others and any use except that for which it's loaned, is prohibited.				Ind. Mod./ Index Rev. <b>1</b>	
			Codice / Code	Sostituisce / Replace	-
			<b>01999807</b>	Sostituito da / Replaced from	-

Pos.	Codice Code	Kit	Q.tà Q.ty	Descrizione Description	Indice modifica Index revision		
18	49270000		4	SPINA MM.5x10 UNI1707 H8 DOWEL PIN MM.5x10 UNI1707 H8	1		
17	45620000		1	PIASTRINA PARAOLIO GR.2 BACK-UP WASHER GR.2	3		
16	42520000		1	LINGUETTA 3.15X6.5 280 HB KEY 3.15X6.5	1		
15	41387112		2	ANTIESTRUSORE Z PL20 R T.N. ANTIEXTRUSION Z PL20 R T.N.	2		
14	40661000		1	ANELLO 30 UNI 7437-DIN 472 RING 30 UNI 7437-DIN 472	0		
13	39800000		1	PARAOLIO BAU2 18X30X7 SHAFT SEAL BAU2 18X30X7	0		
12	39666195		2	GUARNIZIONE PL 20 STANDARD SEZIONE QUADRATA STANDARD SEAL PL 20 SQUARE SECTION	0		
11	39656112		2	GUARNIZIONE PL20 R T.N. SEAL PL20 R N T.N.	2		
10	37583803		1	ROSETTA 12 DIN 7980 GEOMET 321/A WASHER 12 DIN 7980 GEOMET321/A	0		
9	37583716		8	ROSETTA 10 (10,5x16x2) HV300 GEOMET 321/A WASHER 10 (10,5x16x2) HV300 GEOMET 321/A	0		
8	36860000		1	DADO M 12X1,5 UNI 5589-A-6S-GEOMET 321/A PLUS M NUT M 12X1,5 UNI 5589-A-6S-GEOMET 321/A PLUS M	0		
7	36595109		4	VITE TE M 10X110 - 5737 - 10.9 - GEOMET 321/A PLUS M SCREW TE M 10X110 - 5737 - 10.9 - GEOMET 321/A PLUS M	0		
6	27750060		1	INGR.CONDOTTO F-K-PL20.20 DRIVEN GEAR F-K-PL20.20	4		
5	27720060		1	INGR.CONDOTTORE K-PL20.20-82 DRIVE SHAFT K-PL20.20-82	3		
4	21918652		1	COPERCHIO POST. PL20-R/AL TN REAR COVER PL20-R/AL TN	3		
3	21911152		1	COPERCHIO ANT.PL20/AL FRONT COVER PL20/AL	9		
2	17672146		1	CORPO PL20.20-LEB/EA (H = 76) BODY PL20.20-LEB/EA (H = 76)	8		
1	25930700		2	RASAMENTO PL20 R (ES) THRUST PLATE PL20 R (ES)	2		
<b>PAGE 4 OF 4</b>							
Cap.Forn./Rules Suppl.		Trattamento Termico / Thermic Treatment		Trattamento Superficiale / Superficial Treatment		Prof.(mm) / Depht	
-		-		-		-	
Quote senza indicazione di tolleranza / GRADO DI PRECISIONE ACCURACY LEVEL				Dimensioni without tolerance		-	
-				-		-	
Disegnato/Drawing		Approvato/Approved		Mod.Tecn./ Revision		Project	
13-06-2017		13-06-2017		11459		V402	
Firma Signature		RossiC		GuidettiM		File	
-		-		-		01999807	
Stato / State		Scale		Format		-	
-		7:10		A4		-	
Codice Grezzo / Rough Code						-	
-						-	
Particolare / Description						Ind. Mod./ Index Rev.	
MOTORE PLM20.20R0-82E2-LEB/EA-N-EL MOTOR PLM20.20R0-82E2-LEB/EA-N-EL						1	
Codice / Code				Sostituisce / Replace		-	
01999807				Sostituito da / Replaced from		-	



The information hereon is the property of CASAPPA Spa. Without written permission, any copying, trasmittal to others and any use except that for which it's loaned, is prohibited.

