

Signature for approval

Date: _____

For operating condition outside those stated, please consult Casappa S.p.A. Technical sales department

Dimensions w/o tol:

- Both machining ref.: $< 400 \pm 0.6$; $\geq 400 \pm 1$
- One or both rough ref.: ± 3

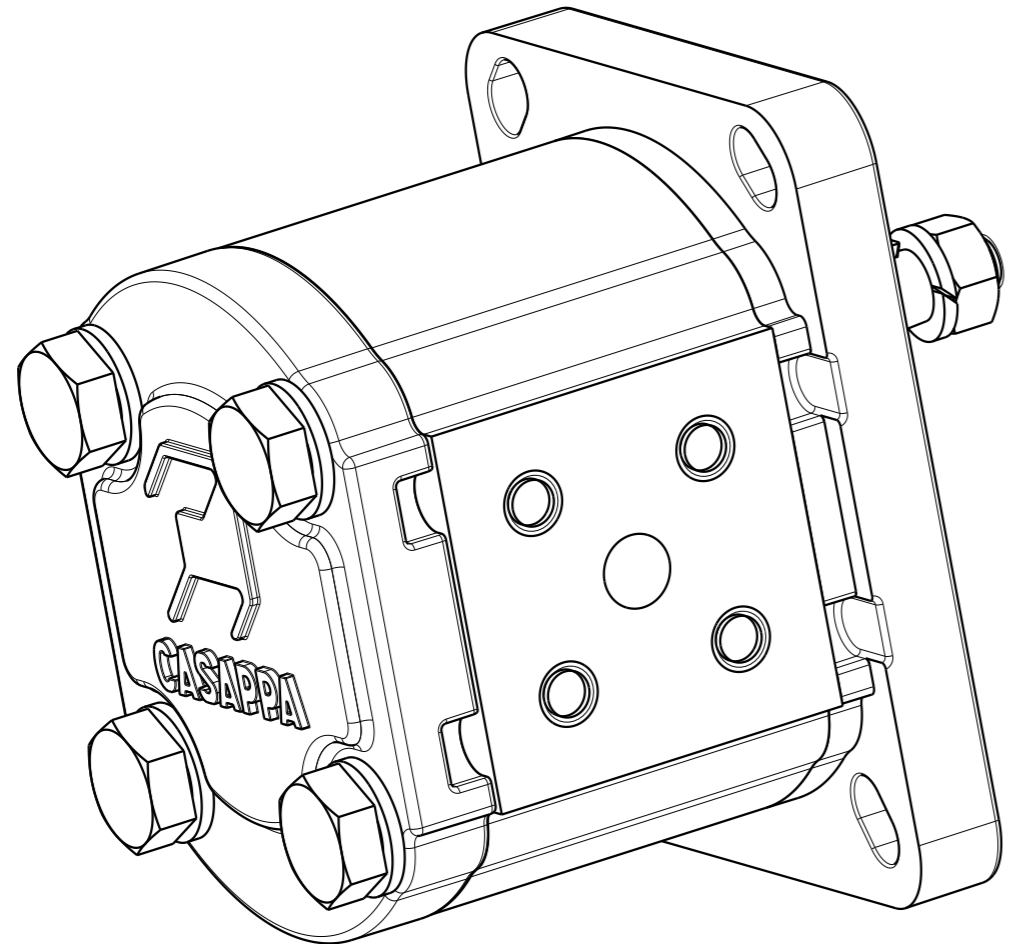
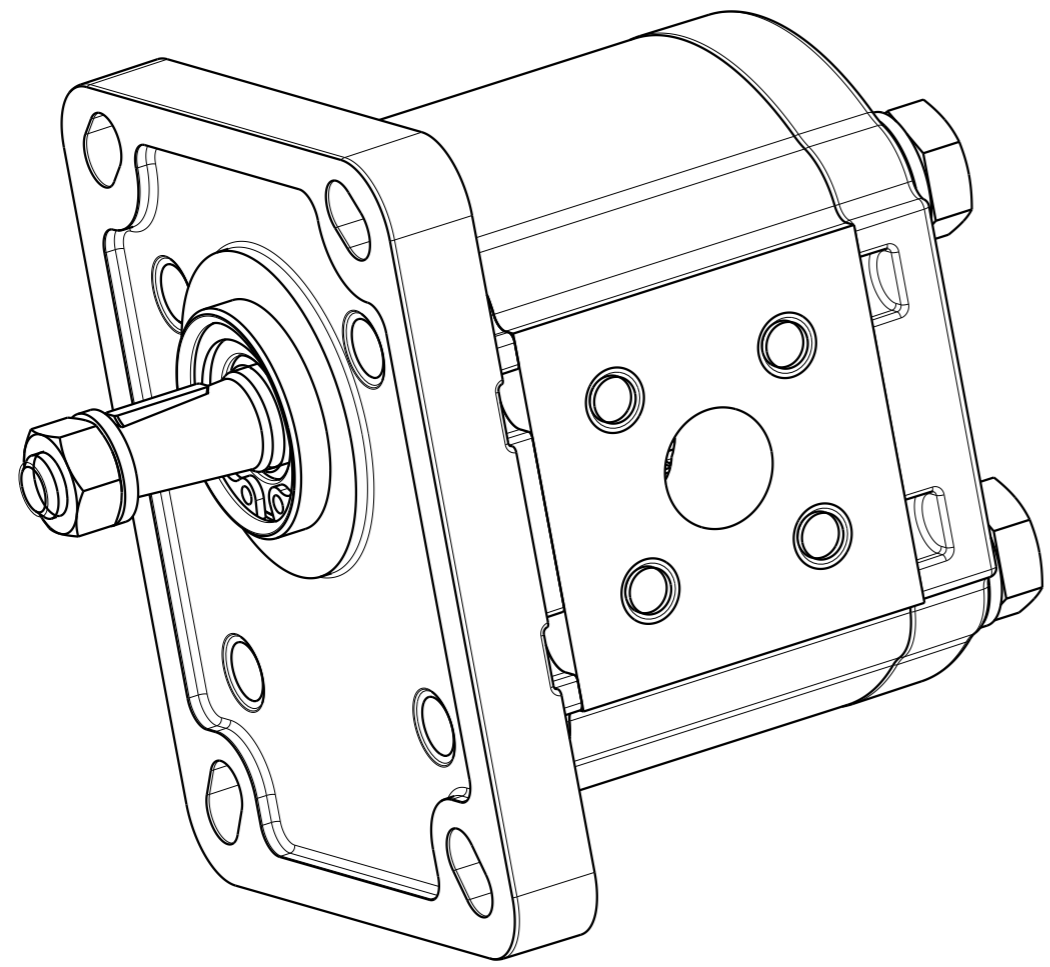
Dimensions are in mm.

PAGE 1 OF 4

Cap.Forn./Rules Suppl.	Trattamento Termico / Heat Treatment	Trattamento Superficiale / Surface Treatment	Prof.(mm) / Depth
-	-	-	-
Quote senza indicazione di tolleranza / Unless otherwise specified tolerances		Materiale / Material	Durezza / Hardness
GRADO DI PRECISIONE ACCURACY LEVEL		-	-
Disegnato/Drawn	Approvato/Approved	Mod.Tecn./ Release change	Progetto/Project
Date	10-04-2020	10-04-2020	S1114
Firma	BassoA	CarusoD	14279
Signature			00372955
Descrizione / Description			Scala/Scale
POMPA PLP10.3,15S0-81E1-LBB/BA-N-EL			1:1
PUMP PLP10.3,15 S0-81E1-LBB/BA-N-EL			Formato/Size
Codice / Code			A3
00372955			Ind. Mod./ Index Rev.
Sostituisce / It replaces			1
-			

CASAPPA
FLUID POWER DESIGN

The information hereon is the property of CASAPPA Spa. Without written permission, any copying, transmittal to others and any use except that for which it's loaned, is prohibited.



PUMP DATA

Senso di rotazione (guardando l'albero conduttore) Direction of rotation (looking on drive shaft)		Sinistro (S) Counter Clockwise (S)
Cilindrata - Displacement		3.34 [cm3/rev]
Campo pressione di alimentazione per pompe Inlet pressure range for pump		0.7 - 3 [bar abs.]
Pressione max continua - Max continuous pressure	P1	260 [bar]
Pressione max intermittente - Max intermittent pressure	P2	280 [bar]
Pressione max picco - Max peak pressure	P3	290 [bar]
Velocità - Speed	min P1	650 [min ⁻¹]
	max P1	4000 [min ⁻¹]
Guarnizioni - Seals type		NBR
Temperatura minima - Min temperature		-25 [°C]
Temperatura massima - Max temperature	continuous	+ 80 [°C]
	peak	+ 100 [°C]
Campo di viscosità - Viscosity range	recommended	12 to 100 mm ² /s (cSt)
	permitted	max 750 mm ² /s (cSt)
Classe di contaminazione raccomandata per il fluido Recommended fluid contamination class	$\Delta p > 200$ bar $\beta x = 75 - 10 \mu m$	8 - Nas 1638 19/17/14 - ISO 4406
	$\Delta p < 200$ bar $\beta x = 75 - 25 \mu m$	10 - Nas 1638 21/19/16 - ISO 4406
Codice del prototipo - Prototype code		-
Codice cliente - Customer code		-
Valvola di massima pressione - Relief valve		- [bar]
Pressione di stand-by valvola LS - Stand-by pressure LS valve		- [bar]
Peso - Weight		0.960 kg
Vernice - Painting		-
Trattamenti speciali - Special treatment		-

Independently from the max rated pressure values indicated in the table, the max admissible torque of the output shaft and (when applicable) of connecting hub(s) must be respected. Consequently it could be necessary to limit the max working pressures accordingly.

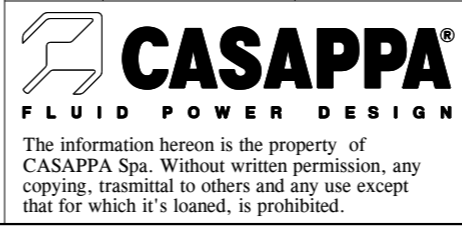
Indipendentemente dai valori di massima pressione riportati in tabella, devono essere rispettate le coppie massime ammissibili su alberi e/o mozzi di trascinamento. Pertanto potrebbe risultare necessario limitare le pressioni massime di esercizio di conseguenza.

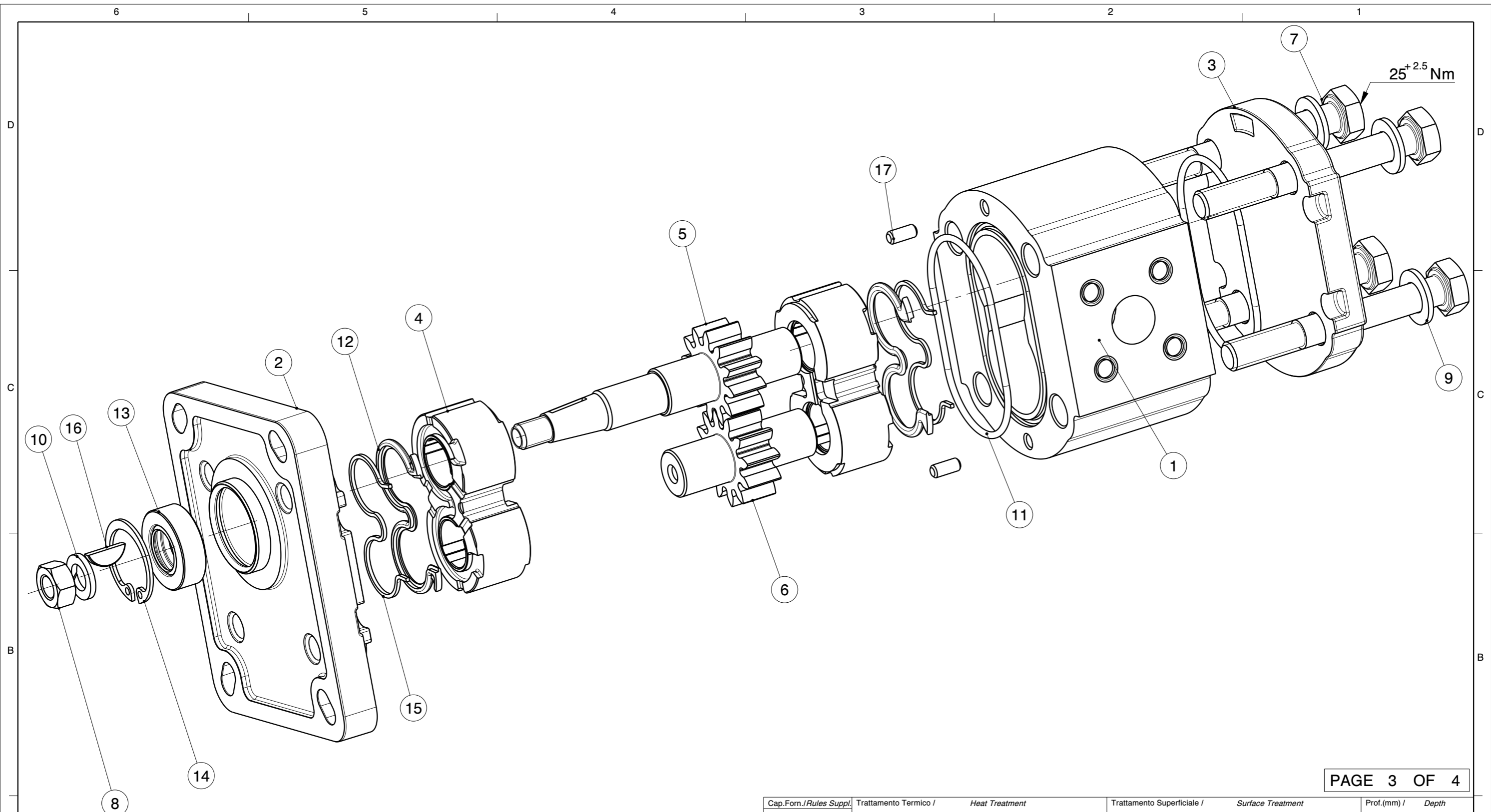
Signature for approval

Date: _____

For operating condition outside those stated, please consult Casappa S.p.A. Technical sales department

Cap.Forn./Rules Suppl.	Trattamento Termico / Heat Treatment	Trattamento Superficiale / Surface Treatment	Prof.(mm) / Depth
-	-	-	-
Quote senza indicazione di tolleranza / Unless otherwise specified tolerances		Materiale / Material	Durezza / Hardness
GRADO DI PRECISIONE ACCURACY LEVEL		-	-
Disegnato/Drawn	Approvato/Approved	Mod.Tecn./ Release change	Progetto/Project
10-04-2020	10-04-2020	14279	S1114
Firma Signature	BassoA	CarusoD	File 00372955
Descrizione / Description		Stato / Process	Scala/Scale
POMPA PLP10.3,15S0-81E1-LBB/BA-N-EL PUMP PLP10.3,15 S0-81E1-LBB/BA-N-EL		-	5:4
Codice / Code		Codice Grezzo / Master Code	Formato/Size
00372955		-	A3
Sostituisce / It replaces		Ind. Mod./ Index Rev.	
-		1	






Cap.Forn./Rules Suppl.	Trattamento Termico / Heat Treatment		Trattamento Superficiale / Surface Treatment		Prof.(mm) / Depth		
-	-		-		-		
Quote senza indicazione di tolleranza / Unless otherwise specified tolerances			Materiale / Material		Durezza / Hardness		
GRADO DI PRECISIONE / ACCURACY LEVEL			-		-		
	Disegnato/Drawn	Approvato/Approved	Mod.Tecn./ Release change	Progetto/Project	Stato / Process	Scala/Scale	Formato/Size
Data	10-04-2020	10-04-2020	14279	S1114	-	1:1	A3
Firma	BassoA	CarusoD		File	Codice Grezzo / Master Code		
Signature				00372955	-		
			Descrizione / Description POMPA PLP10.3,15S0-81E1-LBB/BA-N-EL PUMP PLP10.3,15 S0-81E1-LBB/BA-N-EL			Ind. Mod./ Index Rev. 1	
The information hereon is the property of CASAPPA Spa. Without written permission, any copying, trasmittal to others and any use except that for which it's loaned, is prohibited.			Codice / Code 00372955		Sostituisce / It replaces -		

D

D

17	49250000		2	SPINA MM.3,5X8 DOWEL PIN MM.3,5X8	0
16	42490000		1	LINGUETTA 2,38X4,5 280 HB KEY 2,38X4,5	1
15	41310100		2	ANTIESTRUSORE PL10 S/D Z ANTIESTRUSION PL10 S/D Z	3
14	40630000		1	ANELLO 22 UNI 7437-DIN 472 RING 22 UNI 7437-DIN 472	0
13	39670000		1	PARAOLIO 11X22 N SHAFT SEAL BABSL 11X22X7	1
12	39654300		2	GUARNIZIONE PL10 S/D SEAL PL10 S/D	4
11	38740000		2	ANELLO TOROIDALE PH 2-031 90GRA SH.A (44,17X1,78) O RING SEAL PH 2-031 90GRA SH.A (44,17X1,78)	0
10	37588000		1	ROSETTA 7 UNI 1751 GEOMET 321/A WASHER 7 UNI 1751 GEOMET 321/A	1
9	37583650		4	ROSETTA 8 (8.4x15x1.5) HV300 GEOMET 321/A PLUS M WASHER 8 (8.4x15x1.5) HV300 GEOMET 321/A PLUS M	0
8	36670000		1	DADO M 7 UNI 5588-A-6S-FEZN12-C-1A NUT M 7 UNI 5588-A-6S-FEZN12-C-1A	0
7	36500610		4	VITE TE M 8X65 - 5737 - 10.9 GEOMET 321/A PLUSM SCREW TE M 8X65 - 5737 - 10.9 GEOMET 321/A PLUSM	1
6	27718504		1	INGR.CONDOTTO PL10.3,15 DRIVEN GEAR PL10.3,15	8
5	27715004		1	INGR. CONDUTTORE PL10.3,15-81 DRIVE SHAFT PL10.3,15-81	11
4	23700018		2	RASAMENTO PL10/AL S/D MINORATO (ES) THRUST PLATE PL10/AL S/D MINOR (ES)	3
3	21670200		1	COPERCHIO POST. PL10/AL REAR COVER PL10/AL	2
2	21663950		1	COPERCHIO ANT. PL10-E1/AL FRONT COVER PL10-E1/AL	8
1	17100004		1	CORPO PL10.3,15-LBB/BA (H = 42) BODY PL10.3,15-LBB/BA (H = 42)	12
Pos.	Codice Code	Kit	Q.tà Q.ty	Descrizione Description	Indice Modifica Index Revision

PAGE 4 OF 4

Cap.Forn./Rules Suppl.	Trattamento Termico / Heat Treatment		Trattamento Superficiale / Surface Treatment		Prof.(mm) / Depth	
-	-		-		-	
Quote senza indicazione di tolleranza / Unless otherwise specified tolerances			Materiale / Material		Durezza / Hardness	
GRADO DI PRECISIONE ACCURACY LEVEL			-		-	
	Disegnato/Drawn	Approvato/Approved	Mod.Tecn./ Release change	Progetto/Project	Stato / Process	
Data Date	10-04-2020	10-04-2020	14279	S1114	Scala/Scale	
Firma Signature	BassoA	CarusoD		File	Codice Grezzo / Master Code	Formato/Size
				00372955	-	A4
 CASAPPA® FLUID POWER DESIGN					Ind. Mod./ Index Rev.	
The information hereon is the property of CASAPPA Spa. Without written permission, any copying, trasmittal to others and any use except that for which it's loaned, is prohibited.					1	
Descrizione / Description			Codice / Code		Sostituisce / It replaces	
POMPA PLP10.3,15S0-81E1-LBB/BA-N-EL			00372955		-	
PUMP PLP10.3,15 S0-81E1-LBB/BA-N-EL						